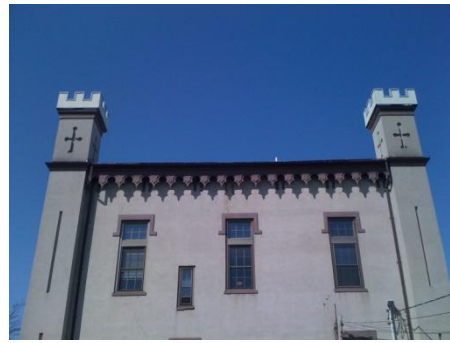


# Office of Planning & Development

The mission of the Office of Planning and Development is to identify and implement the community's vision for economic, environmental, and community health, sustainable development and sustainable transportation. This mission is accomplished through participatory visioning, comprehensive and strategic planning; coordination with the public, customers, citizen boards, and other city departments; historic and community preservation; enhancing environment systems; sustainable development and regulatory activities to achieve community goals; sustainable transportation systems; and information systems to inform the public and improve planning.



Planning and Development provides mapping services, supports community preservation, provides planning services to other city departments, and oversees site planning, land use permits, zoning, creation of rail trails, and conservation land.

*"OPD has been extremely helpful, building on their extensive experience, with the Smith Vocational lease for a cell tower site, which will help fund our students' needs for years to come."*

*John Kelly, Smith Vocational Agriculture*



*The collaborative Bean/Allard project that OPD coordinated for the city adds one mile to the Mill River Greenway, protects the largest remaining unprotected farmland outside of the Meadows, adds desperately needed recreation opportunities at Florence Fields, and provides additional community gardens. In terms of meeting agriculture, open space and recreation needs, it doesn't get any better than this.*

*Wayne Feiden, Director*



*"The new rail trail network lets people live more effectively by connecting key points in the city and with the amazing splendor of the valley."*

*Nick Horton, Friends of Northampton Trails & Greenways*

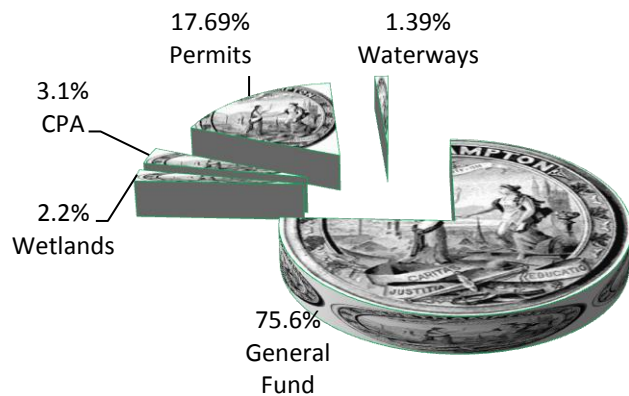
*Wayne Feiden, FAICP  
210 Main Street*

[wfeiden@northamptonma.gov](mailto:wfeiden@northamptonma.gov)

*T: 413.587.1266 F:413.587.1264*

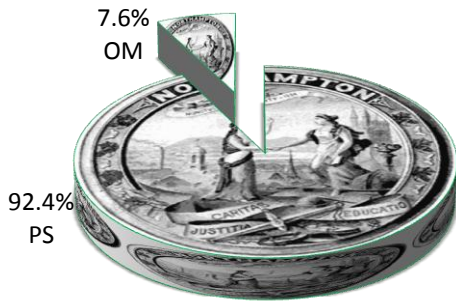
## Staffing Proposal for FY2012

Position Title	Full or Part time	Annual Salary	Funding Sources	Budgeted FTE	Change from FY2011	Union affiliation
Director of Planning & Development	Full Time	77,444	General Fund (.05 FTE reimbursed by waterway fees)	1.0		NAPEA
Senior Land Use Planner / Permits Administrator	Full Time	53,063	General Fund (partially covered by permit fees)	1.0		NAPEA
Conservation, Land Use, Preservation Planner	Full Time	41,410	General Fund (0.1 FTE reimbursed by wetland fees) CPA (0.4 FTE)	1.0		NAPEA
GIS and Information Systems Coordinator	Full Time	52,148	General Fund (0.3 FTE reimbursed from water and sewer enterprises)	1.0		NAPEA
Department Secretary	Full Time	33,093	General Fund	1.0		AFSCME
CPA Support Staff	Part Time, 10 hours/wk	10,504	CPA	0.29		NR



### Where Our Funding Comes From

The annual budget of the Office of Planning and Development is supported through the General Fund, Permits and Fees, Waterways fund, Wetlands filing fees, and the Community Preservation Act (CPA).



### How We Spend Our Money

This chart shows how much of the annual budget of the Planning Department is spent on staff (PS) and on Ordinary Maintenance (OM).

## Some Accomplishments At A Glance

### *beyond our day-to-day operations*

- OPD created a new single on-line application for all 18 permits issued by OPD-boards, for a faster, more efficient, and more transparent permit process. ([You can find the application here](#))
- OPD opened rail trails which transformed three separate rail trails into one integrated network.
- OPD coordinated city efforts to preserve the Bean and Allard farms for agriculture, recreation, conservation, and community gardens.
- OPD coordinated efforts to streamline zoning to make it much more accessible to the public and to encourage development on King Street which will encourage smart growth that can actually happen.
- OPD coordinated a new Open Space and Recreation Plan, with what may be more municipal board co-sponsorship than any other open space plan in the state.
- OPD has moved huge volumes of information to the web, making it easier for residents, property owners, business owners, students, surveyors, engineers and others to do their work.

## The Year Ahead

- OPD is starting implementation of the new [open space plan](#), including a future greenway/rail trail from Damon Road to Hatfield, development of the Florence Fields Recreation Area, and a future city hall park.
- OPD is coordinating planning and regulatory efforts to implement Sustainable Northampton and make the city more sustainable while encouraging more economic development.
- OPD is focusing on how on-line permit applications can be more user-friendly.
- OPD is working for zoning reform that will make business investment in commercial areas easier while improving the quality of development and design.
- OPD is working to support sustainable transportation to make it safer for all modes of travel.

## OFFICE OF PLANNING & DEVELOPMENT

	Actual FY 2010	Budget FY 2011	Budget FY 2012	\$ Change FY11-12	% Change FY11-12
<b><u>Appropriation by Major Object</u></b>					
Personal Services	224,518	240,712	261,047	18,946	7.9%
Ordinary Maintenance	21,544	21,622	21,622	0	0.0%
Other than Ordinary Maintenance	0	0	0	0	0.0%
<b>Total</b>	<b>246,062</b>	<b>262,334</b>	<b>282,669</b>	<b>18,946</b>	<b>7.2%</b>

### Appropriation by Major Activity

Planning & Development	179,710	257,987	278,322	18,946	7.3%
Land Acquisition	0	0	0	0	0.0%
Pioneer Valley Planning Comm. Assmt	4,347	4,347	4,347	0	0.0%
CDBG/SHP Grants Admin & Prog	62,005	0	0	0	0.0%
Total General Fund	246,062	262,334	282,669	18,946	7.2%

### Financing Plan

General Fund	159,130	193,638	213,752	18,725	9.7%
Wetland Filing Fees	4,086	4,086	6,235	2,149	52.6%
Waterways Fund	4,086	4,086	3,922	(164)	-4.0%
CDBG – Federal	36,563	6,000	0	(6,000)	-100.0%
Supportive Housing Grant - Federal	16,303	0	0	0	0.0%
Community Preservation Act	6,521	4,524	8,760	4,236	93.6%
Planning Fees & Permits	19,373	50,000	50,000	0	0.0%
Total	246,062	262,334	282,669	18,946	7.2%

## Office of Planning and Development

9 1 8 0 7 3 4 2 6 5

by the numbers

- 2,685** Acres of conservation land under management, almost 54 times the park land in the Boston Common, the nation's oldest public park
- 1,000** Acres of non-city owned open space we are monitoring for possible acquisition
- 18** Permit processes we coordinate
- 10** Volunteer boards and committees staffed
- 9,514** Parcels of land we map
- 75** Percent of Northampton homes which will have easy access to network of multi-use rail trails in the next decade (we are at 65% now)
- 4,000,000** Grant dollars brought into Northampton in 2011
- 250** Number of late afternoon and evening public meetings our department staffs each year