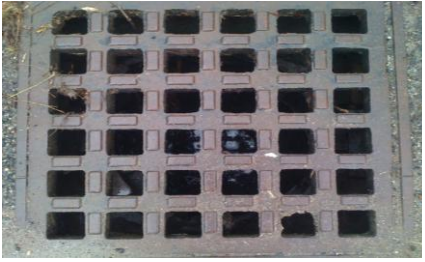


# *Sustainable Northampton:*

*Focus on...*  *Infrastructure and Capital Resources*



## *Goals*

Insure the Capital Improvement program is coordinated with Sustainable Northampton plan goals and objectives

Program and utilize public buildings for maximum efficiency and availability

Upgrade the city's aging stormwater management system

*Photos: storm drain; bike lane on roadway; sewer pipes; hydrants at DPW water building on prospect Street*

Insure the Capital Improvement Program is coordinated with Sustainable Northampton plan goals and objectives

<i>how our budgets are supporting this goal</i>	
FY 2011	FY 2012
	Construction begins on the new Police Station, which will be built to LEEDS Silver certification criteria.
Planning staff serves on Capital Improvements Committee and brings Sustainable Northampton Plan lens to CIP project review.	
DPW commenced a Comprehensive Wastewater Management Plan and a comprehensive Water Management Plan to provide long range capital goals.	

<i>how our budgets are supporting this goal</i>	
FY 2011	FY 2012
Lilly Library hosts various City meetings in its Community Room. Notably, Lilly Library was one of the sites for <i>cityschool</i> in FY2010 & FY2011.	
Recreation & School depts. collaborate to allow use of the Aquatic Center at JFK Middle School & other school facilities by students, residents and community groups and teams.	
SVAHS improves and updates educational equipment, including heavy equipment and technology, which it shares with other city departments.	
NFD Training Space is also utilized as the City's Emergency Operations Center (EOC) and often provides a space for community meetings.	

Program and utilize public buildings for maximum efficiency and availability

Upgrade the city's aging stormwater management system

*how our budgets are supporting this goal*

FY 2011

FY 2012

CEDO supports DPW priority infrastructure projects with CDBG funding.

Treasurer participates in review of Capital Projects and borrows through low interest programs offered by the MWPAT (Massachusetts Water and Pollution Abatement Trust).

Planning will identify opportunities for wetlands and stormwater mitigation to reduce impediments to business expansion.

DPW completed a City-wide stormwater and flood control system assessment.

Dispatch used Connect CTY to notify residents when DPW work on water mains was going to impact traffic during morning commute hours.