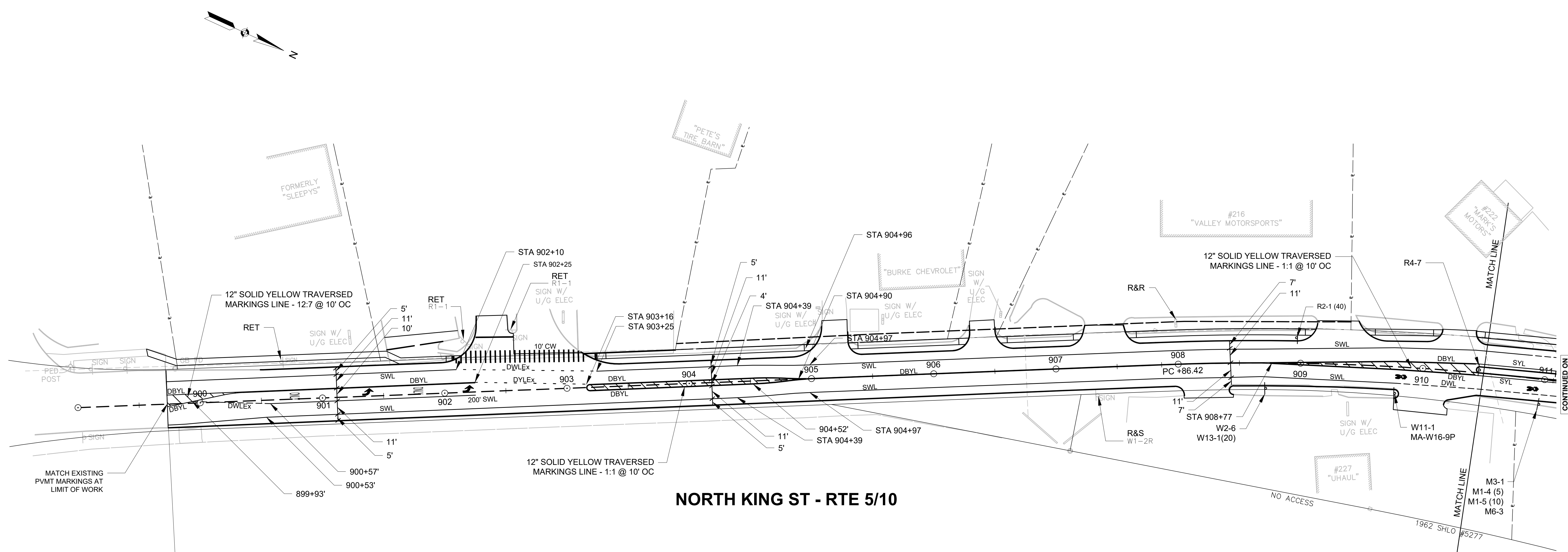


**NORTHAMPTON
N. KING ST. (RTE 5/10) / HATFIELD ST.**

STATE	FED. AID PROJ. NO.	SHEET NO.	TOTAL SHEETS
MA	CMQ-003S(317)X	37	127
PROJECT FILE NO.		606555	

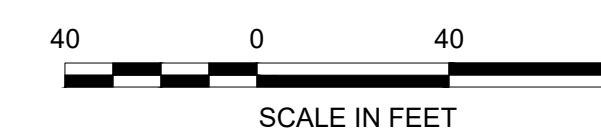
SIGN & PAVEMENT MARKING PLAN



NORTH KING ST - RTE 5/10

LIMIT OF WORK
STA 899 + 73.00
N: 2951700.9870
E: 347671.6277

NOTE:
FINAL LOCATION OF SPEED LIMIT SIGNS, R2-1(X-X), SHALL BE DETERMINED BY A SPEED STUDY TO BE COMPLETED BY MASSDOT.



CONTINUED ON
SHEET NO. 38

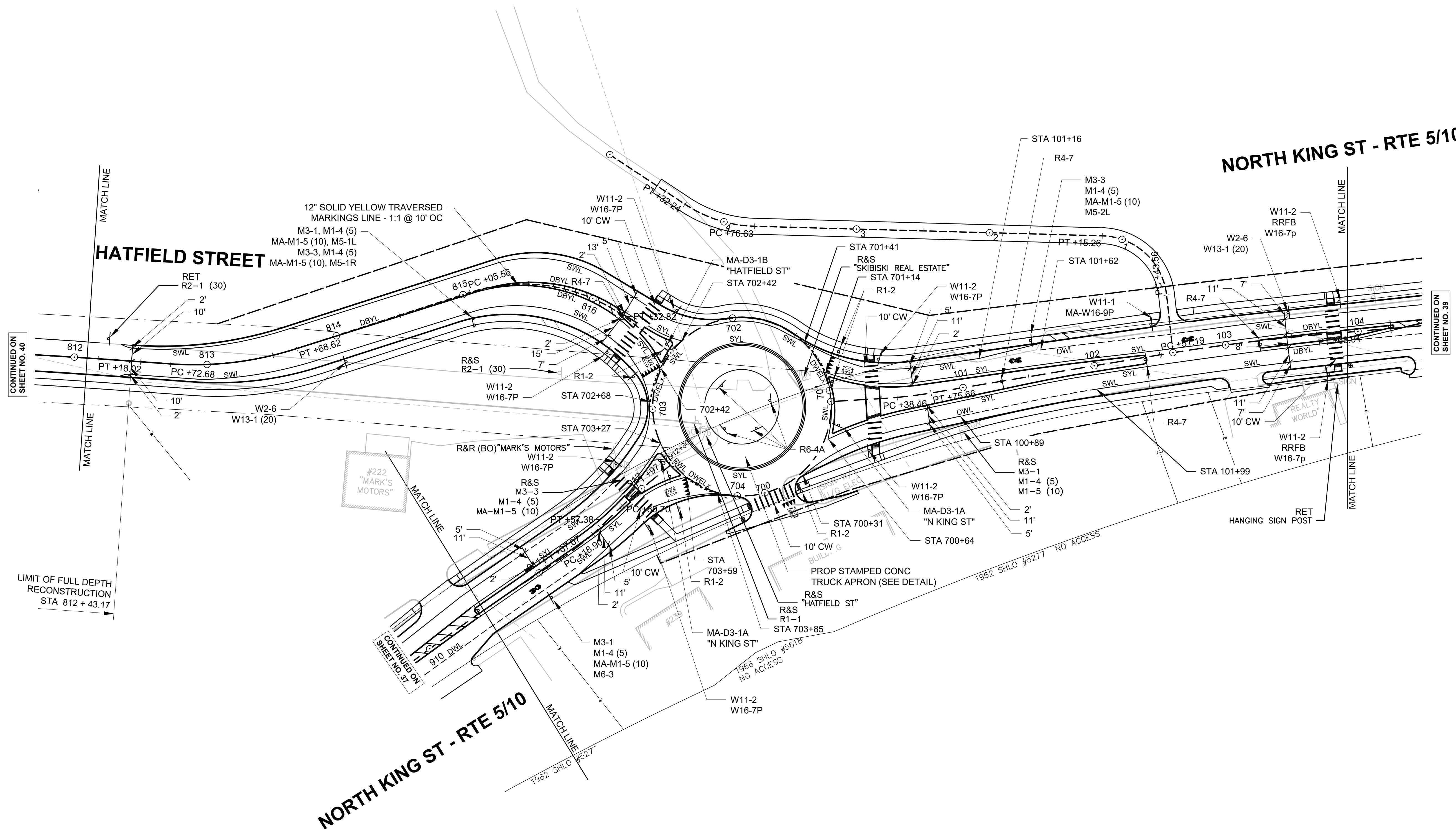
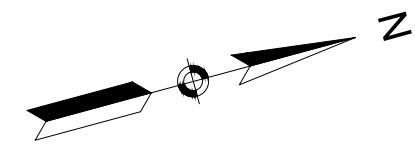
Tight & Bond, Inc. J:\V\N0890_Northampton\Drawings\75 DESIGN\DWG\606555\7503.dwg Nov 21, 2019 - 4:17pm Plotted By: AGB

606555\75\%JD (PAVEMENT MARKING).DWG 21-Nov-2019

NORTHAMPTON
N. KING ST. (RTE 5/10) / HATFIELD ST.

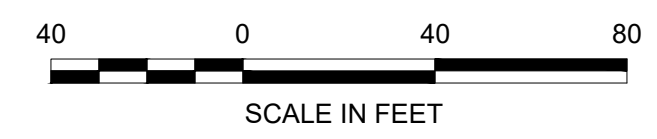
STATE	FED. AID PROJ. NO.	SHEET NO.	TOTAL SHEETS
MA	CMQ-003S(317)X	38	127
PROJECT FILE NO.		606555	

SIGN & PAVEMENT MARKING PLAN



LIMIT OF FULL DEPTH RECONSTRUCTION STA 812 + 43.17

NOTE:
FINAL LOCATION OF SPEED LIMIT SIGNS, R2-1(X-X), SHALL BE DETERMINED BY A SPEED STUDY TO BE COMPLETED BY MASSDOT.



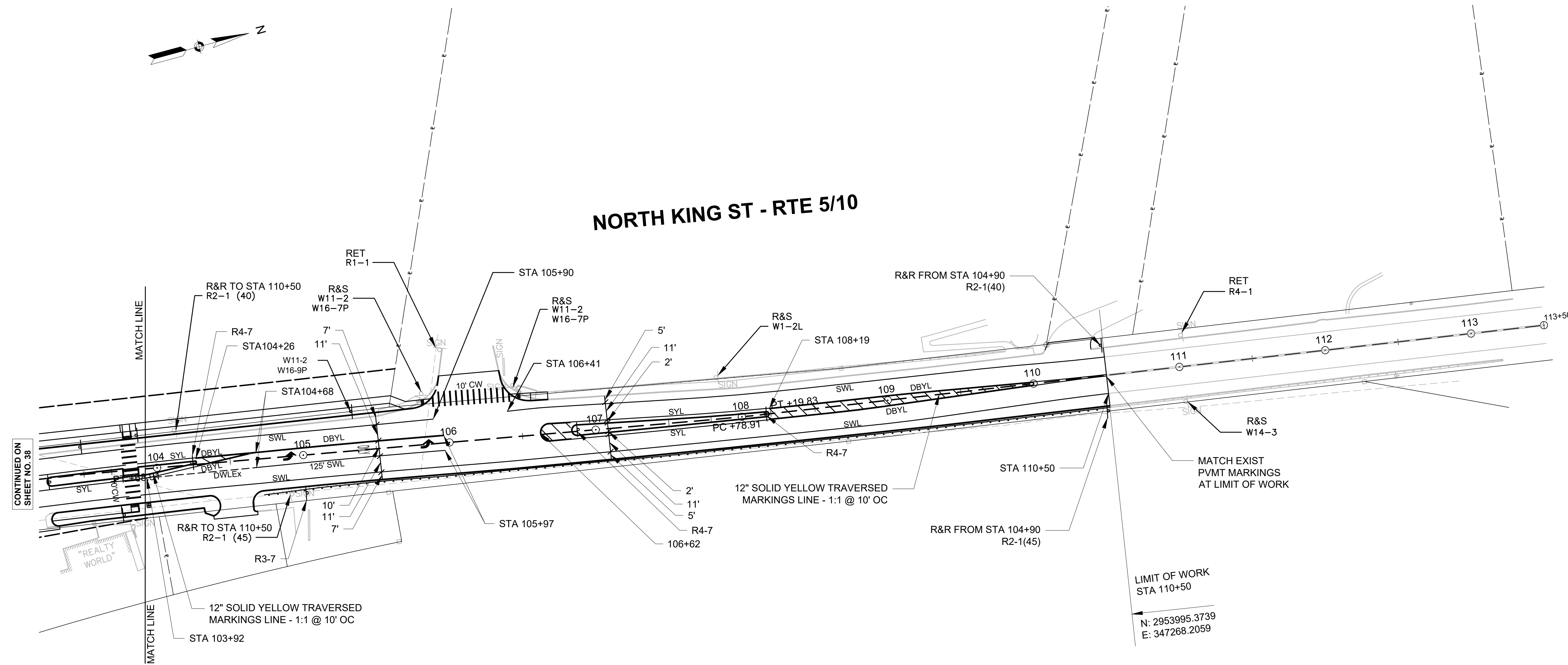
Tight & Bond, Inc. J:\N\0890_Northampton\Drawings\75 DESIGN\DWG\606555\755.dwg Nov 21, 2019 - 4:17pm Plotted By: AGB

606555\75.dwg (PAVEMENT MARKING).DWG 21-Nov-2019

**NORTHAMPTON
N. KING ST. (RTE 5/10) / HATFIELD ST.**

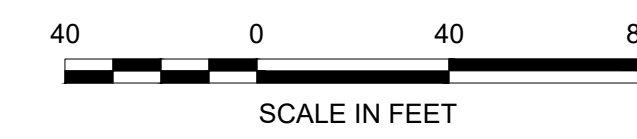
STATE	FED. AID PROJ. NO.	SHEET NO.	TOTAL SHEETS
MA	CMQ-003S(317)X	39	127
PROJECT FILE NO.		606555	

SIGN & PAVEMENT MARKING PLAN



Tight & Bond, Inc. J:\N\0890_Northampton\Drawings\75 DESIGN\DWG\606555\7593.D (Pavement Marking).dwg Nov 21, 2019 - 4:17pm Plotted By: AGB

NOTE:
FINAL LOCATION OF SPEED LIMIT SIGNS, R2-1(X-X), SHALL BE DETERMINED BY A SPEED STUDY TO BE COMPLETED BY MASSDOT.



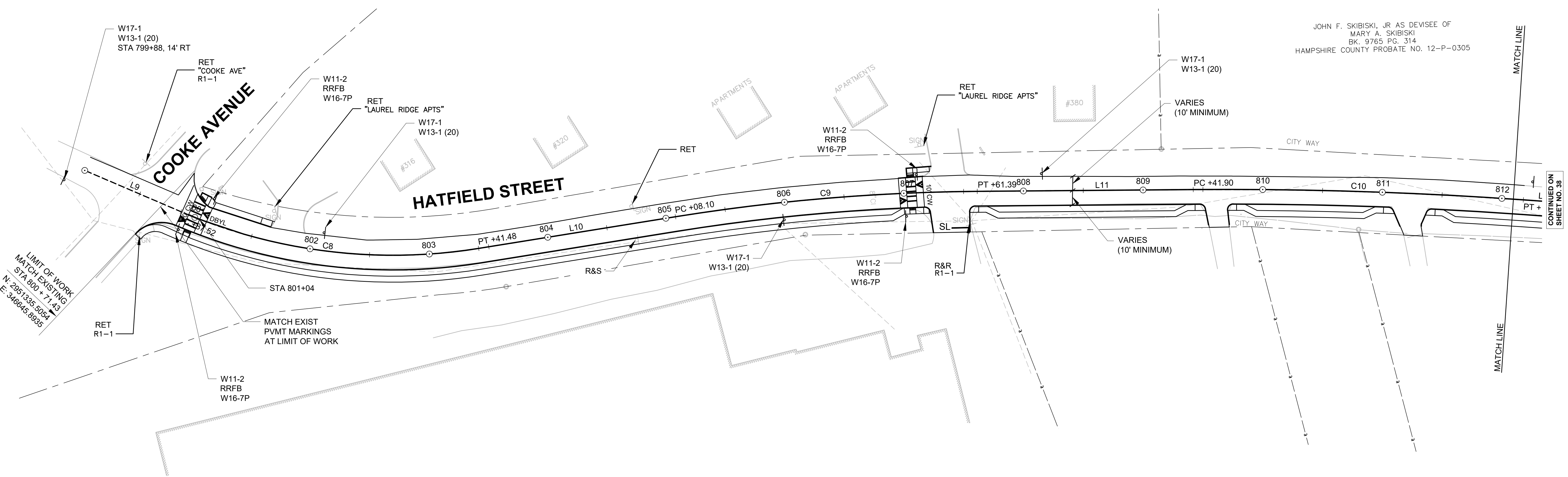
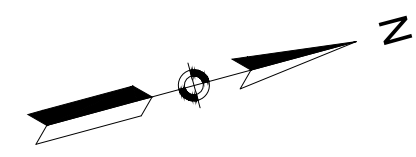
606555\75%JD (PAVEMENT MARKING).DWG 21-Nov-2019

**NORTHAMPTON
N. KING ST. (RTE 5/10) / HATFIELD ST.**

STATE	FED. AID PROJ. NO.	SHEET NO.	TOTAL SHEETS
MA	CMQ-003S(317)X	40	127
PROJECT FILE NO.		606555	

SIGN & PAVEMENT MARKING PLAN

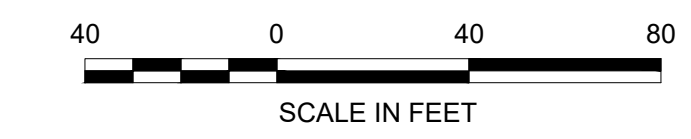
JOHN F. SKIBISKI, JR AS DEVISEE OF
MARY A. SKIBISKI
BK. 9765 PG. 314
HAMPSHIRE COUNTY PROBATE NO. 12-P-0305



LIMIT OF WORK
MATCH EXISTING
STA 800 + 71.43
N: 2951335.5054
E: 3466645.8995

MATCH EXIST
PVT MARKINGS
AT LIMIT OF WORK

CONTINUED ON
SHEET NO. 39



Tight & Bond, Inc. J:\N\0890_Northampton\Drawings\75 DESIGN\DWG\606555\755.dwg (Pavement Marking).dwg Nov 21, 2019 - 4:17pm Plotted By: AGB

606555\75.dwg (PAVEMENT MARKING).DWG 21-Nov-2019